

MONTHLY MEMBERSHIP PROGRESS REPORT

District A 3

Results as of: 5/31/2026

GMT:

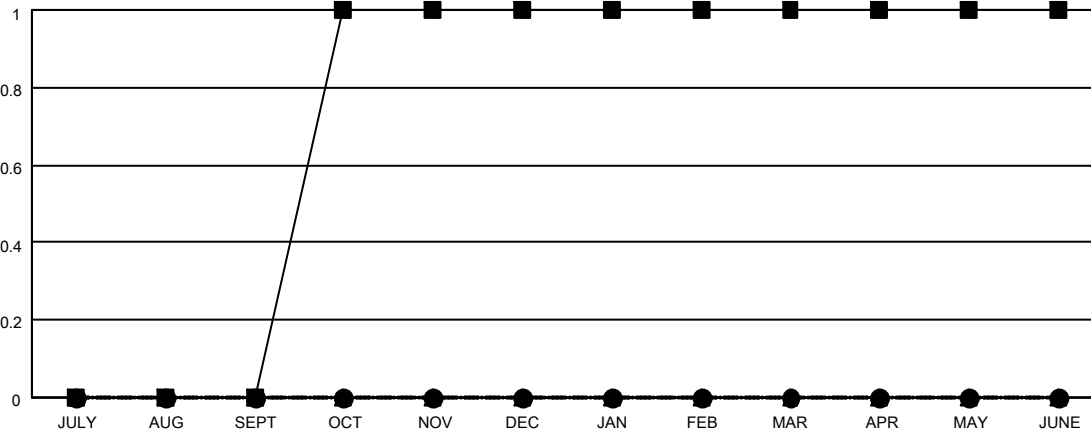
LOCATION ONTARIO

GMT CA

Clubs			
RESULTS FOR 2025-2026			
QUARTER	NEW CLUB GOAL	NEW CLUBS	DROPPED CLUBS
JULY/AUG/SEPT	0	0	0
OCT/NOV/DEC	1	0	0
JAN/FEB/MAR	0	0	0
APR/MAY/JUNE	0	0	0

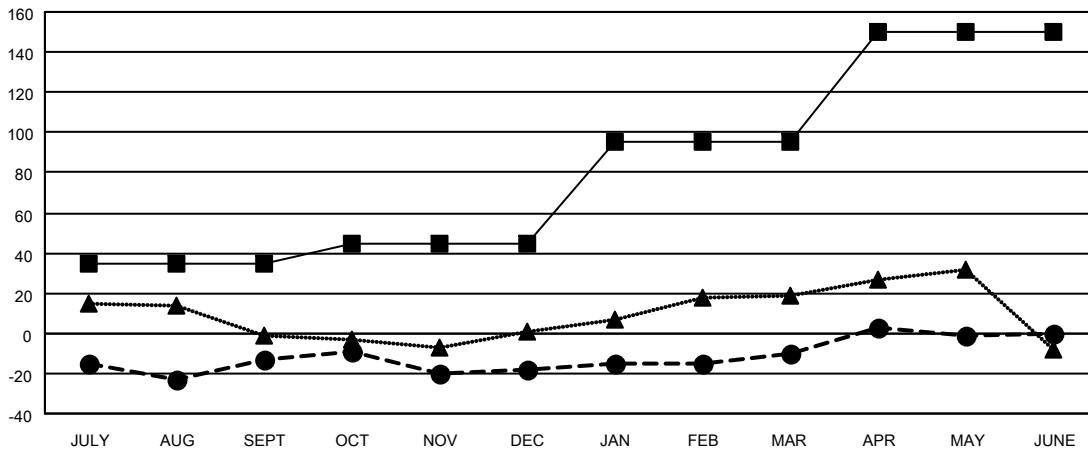
Members			
RESULTS FOR 2025-2026			
QUARTER	MEMBER GROWTH NET GOAL	MEMBER GROWTH ACTUAL	DROPPED MEMBERS ACTUAL (including transfers)
JULY/AUG/SEPT	35	46	44
OCT/NOV/DEC	10	60	51
JAN/FEB/MAR	50	31	20
APR/MAY/JUNE	55	30	17

GOALS AND ACTUAL NEW CLUBS CUMULATIVE



- - CURRENT YEAR GOALS FOR NEW CLUBS
- - CURRENT YEAR ACTUAL NEW CLUBS
- ▲ - LAST YEAR ACTUAL NEW CLUBS

GOALS AND ACTUAL MEMBERS CUMULATIVE



- - MEMBER GROWTH NET GOAL
- - MEMBER GROWTH ACTUAL
- ▲ - LAST YEAR MEMBERSHIP ACTUAL

DROPPED CLUBS: 0	38 CLUBS OF 48 ADDED 1 OR MORE NEW MEMBERS	GENDER DISTRIBUTION MALE 675 (53.23%) FEMALE 592 (46.69%)
DROPPED MEMBERS DECEASED 24 CLUB CANCELLED 0 OTHER 104 TOTAL 128	CLICK HERE FOR CUMULATIVE MEMBERSHIP DATA	TOTAL FAMILY UNIT MEMBERS 326 FAMILY MEMBERS PAYING HALF DUES 169